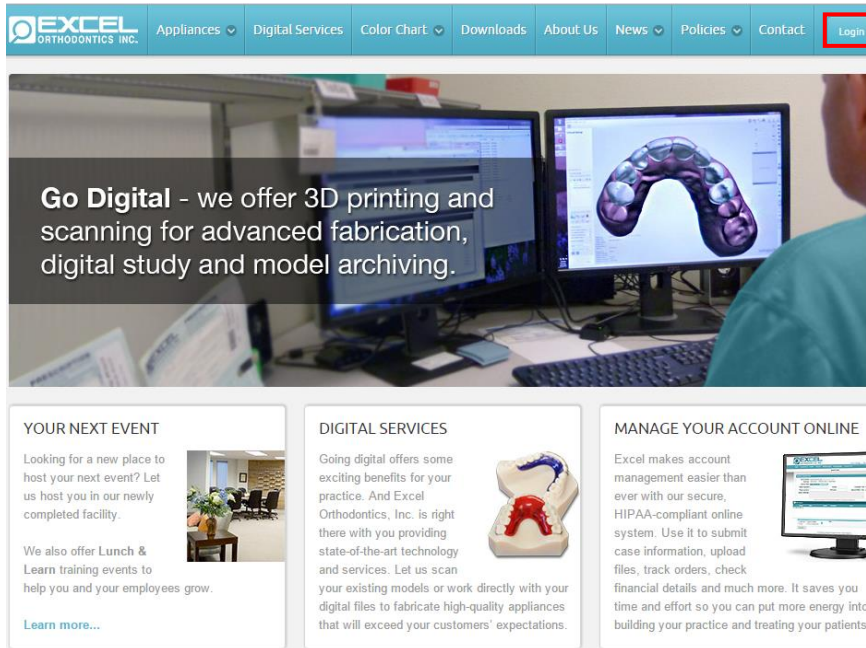
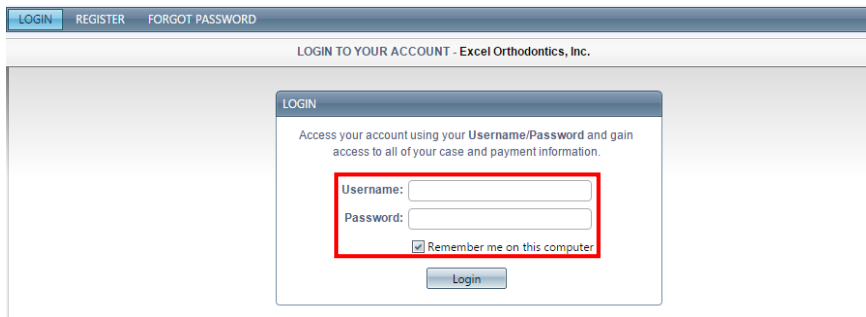


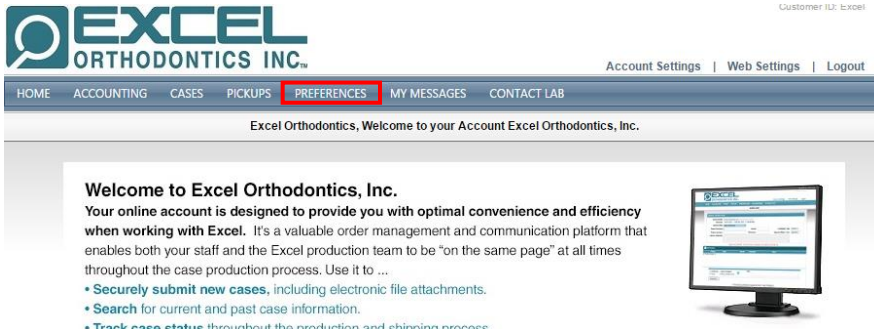
1. Open web browser and go to the Excel Orthodontics website at [www.Excelorthodontics.com](http://www.Excelorthodontics.com).
2. Click on the login button at the top right of the screen.



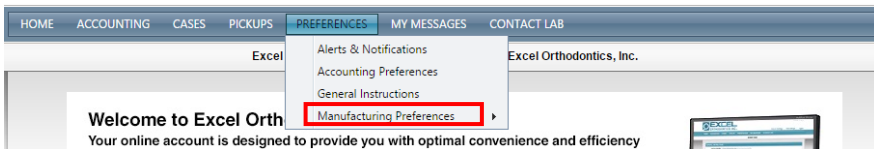
3. Enter username and password in the provided space. (Register for an account if necessary.)



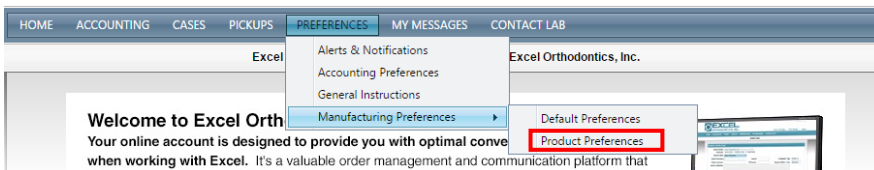
- On the home screen of the account click on the preferences tab in the menu. A drop down menu will appear.



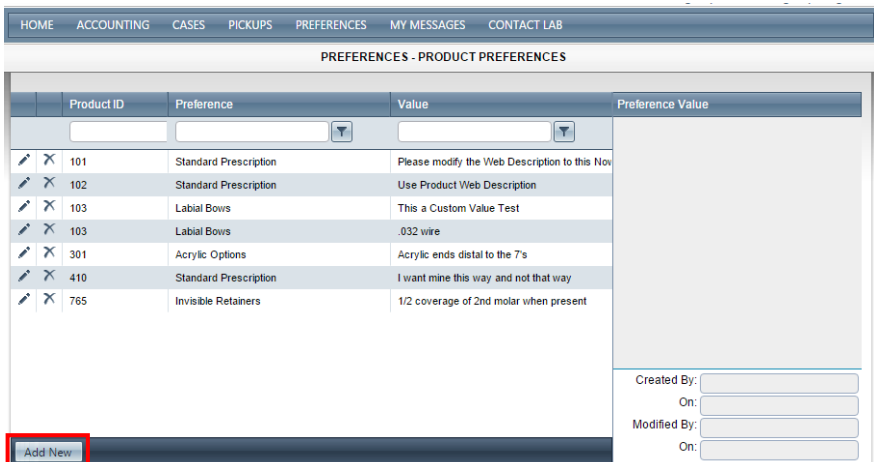
- Click on manufacturing preferences.



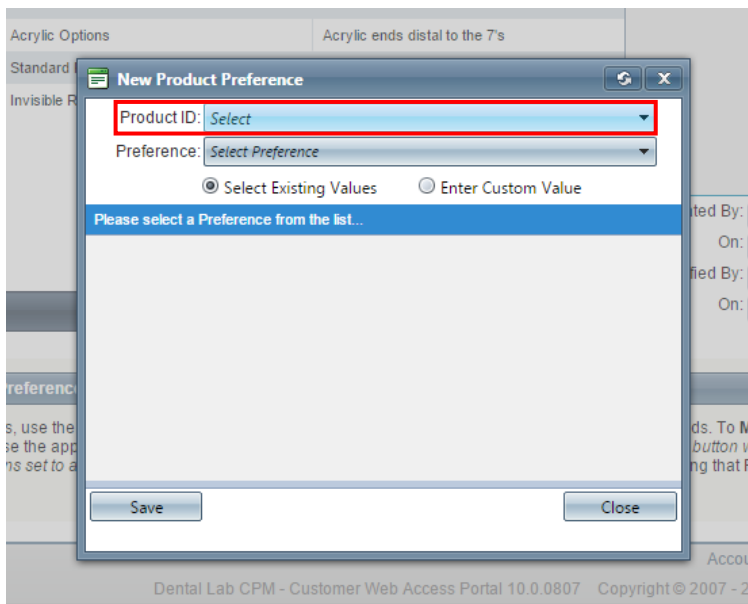
- Click on product preferences.



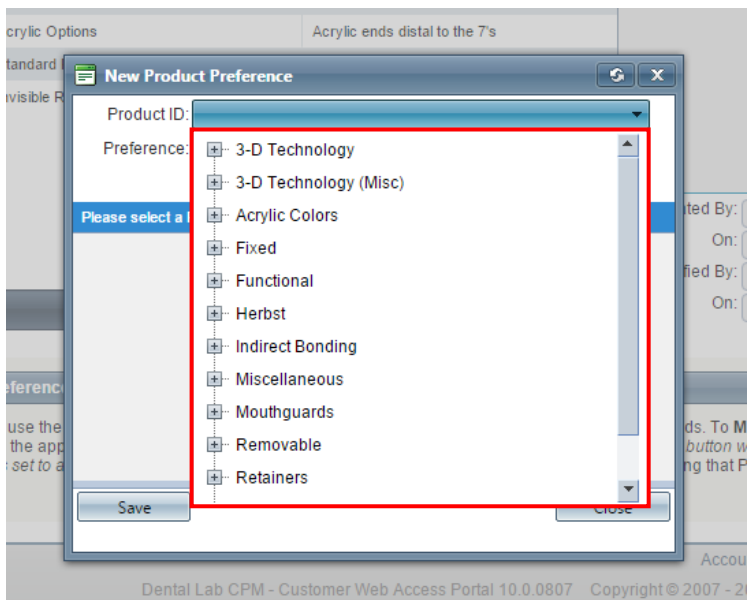
- Click on "Add New" at the bottom left of the window of listed preferences.



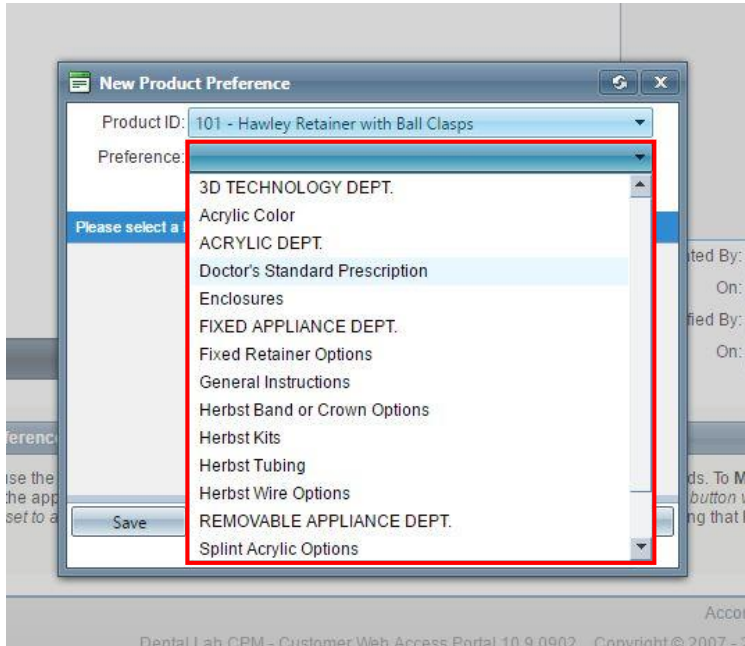
8. Click on the product ID drop down menu.



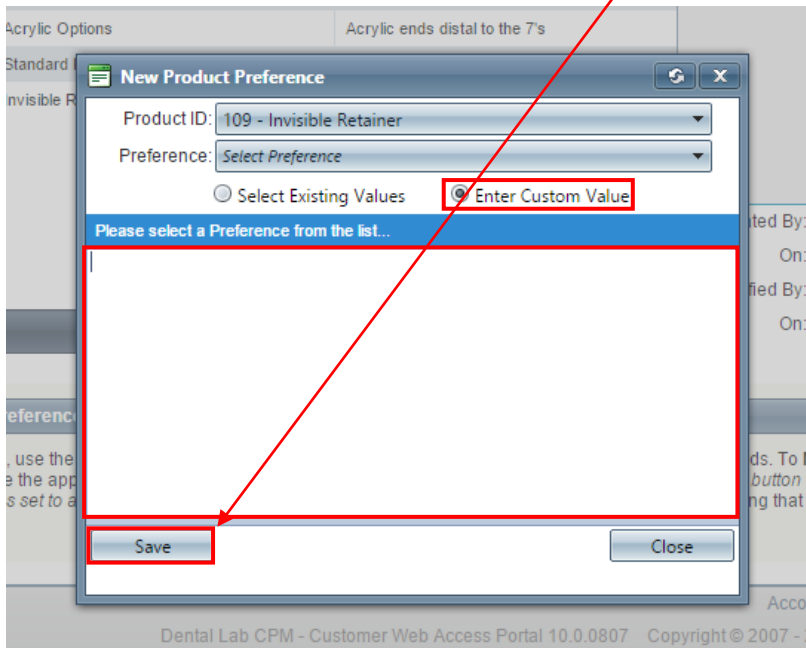
9. Select a product.



10. Click on the preference drop down menu.
11. Select Doctors Standard Prescription



12. Choose enter custom values.
13. For Custom Value, enter your preference & save.



14. Repeat steps 7-14 for additional preferences.